

We aim at the best speed dome cameras to fit your needs!

Features

- **Miniature 5-in Profile & Integrated Construction**
- **Optional Color 18x, 22x, 23x Optical Cameras, up to 8x Digital Zoom**
- **Choice of 23x Day/Night Camera**
- **On-Screen Display Menu**
- **Multi-protocol Setting**
- **Built-in Memory to Store Presets with Titles, Preset Tours & Pattern Tours**
- **Weather-resistant IP66 Design for Outdoor Dome**
- **Easy Installation with Several Mounting Modes**

Built-In Multi-Protocol Solution

MultiVision dome is compatible with various protocols: Pelco-P, Pelco-D, VCL, Molynx, Vicon, Diamond, Kalatel, Lilin, Univision, Philips, American Dynamics.

Optical power zoom lens

A reliable built-in 18-23X optical lens allows you to monitor a scene from any angle. Combined with 8X digital zoom, the total zoom ratio is up to X184.

High resolution&high sensitivity

Thanks to high resolution more than 470 TV-lines, picked-up images are reproduced with detail and clarity. High sensitivity down to 0.013 lux (23X day/night) help to deliver usable images even in extreme low light.

Pattern tours

Up to 4 pattern tours let you program the dome camera to follow a continuous memorized path---panning, tilting and zooming at any speed you want and stopping at selected targets along the way.

Reliable&precise motors

Digital controlled stepping motors locate the camera precisely and rapidly when seeking presets; on the other hand extreme low pan speed down to 0.5° /s is available to avoid image vibration when on the narrowest zoom angle.

Non-volatile memory

Built-in receiver with integrated CPU and SD RAM stores 80 presets with titles, 4 preset tours & 4 pattern tours without loss.

All weather functions

Double housings and heater-and-fan unit allow the outdoor dome to operate under a wide range of temperatures: -40°C to +70°C.

Acrylic down cover

Optional clear and smoked down covers are specially designed to avoid image distortion.

DR-E588

Camera		Format		Environment & Cover		PCB	
F	18X color	P	PAL	0	Wall mount, indoor, clear	0	No double-twisted wire
C	22X color	N	NTSC	1	Wall mount, indoor, smoked	2	With double-twisted wire
E	23X color/mono			3	Ceiling, clear	M	AD Manchester, no double-twisted wire
				4	Ceiling, smoked	P	Phillips
				6	Wall mount, outdoor, clear		
				7	Wall mount, outdoor, smoked		

Specification

5" indoor/outdoor stepping motor dome

ELECTRICAL

Power supply: AC 24±4V 50/60±1Hz

Power consumption: 10W (Indoor dome)
50W (Outdoor dome)

OPERATIONAL

Receiver: Built-in

Motor: Stepping Motor

Sync system: Internal

Preset: 80 presets

Zoom-rotation Interaction:

Control speed auto adjust according to focus length

Auto flip: Rotates 180° when camera tilts to the vertical position

Auto pan scan: 355° programmable

Manual pan speed: 0.5° - 140° /s(non-grade)

Manual tilt speed: 0.5° - 140° /s(non-grade)

Preset speed: 300° /s

Pan rotation range: 360° continuous

Tilt range: Tilt 90°

Communication: RS-485 or Manchester Code

Baud rate: 2400/4800/9600/19200 bps

ENVIRONMENTAL

Operating Temp: 0°C - +40°C (Indoor dome)
-51°C - +70 °C : (outdoor dome)

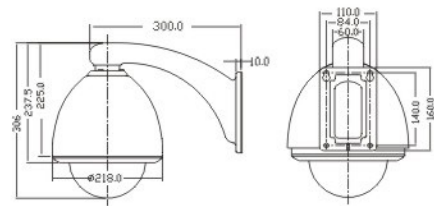
Fan & Heater: Fan works continuously; heater auto-starts(outdoor dome)

Camera optional data table

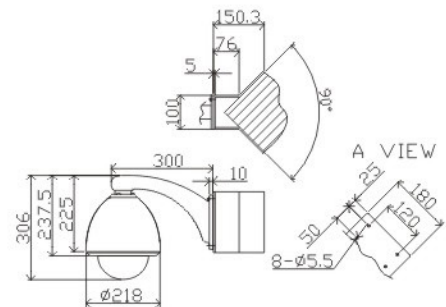
Model	18X (PAL/NTSC)	22X (PAL/NTSC)	23X (PAL/NTSC)
	Color	Color	Day/night switch
Sync System	Internal	Internal/External	Internal
Image Sensor	1/4" CCD		
Scan System	2:1 interlacing		
Resolution	≥470TVL	≥470TVL	470TVL/550TVL
Sensitivity	1.0Lux	0.02Lux	Color 0.08Lux Mono 0.013Lux
Iris	Auto/Manual		
Focus	Auto/Manual		
Zoom Magnification	72X (optical 18X digital 4X)	176X (optical 22X, digital 8X)	184X (optical 23X, digital 8X)
Zoom Length	4.1-73.8mm	4-88mm	3.6-82.8mm
Angle of View	WIDE 48° /TELE 2.7°	WIDE 47° /TELE 2.2°	WIDE 54° /TELE 2.5°
B.L.C.	Auto		
White Balance	Auto		
Gain Control	Auto		
Signal format	≥50dB		
S/N	≥50dB		
Video Output	1.0±0.2Vp-p		

Mounting Options

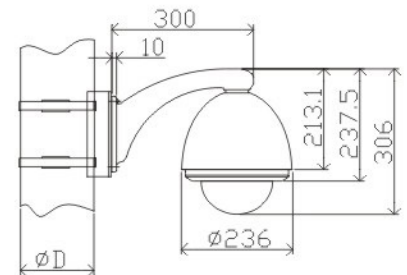
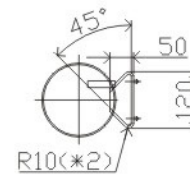
Mounting options include ceiling, wall, pole, corner and pendant mounts by using accessories.



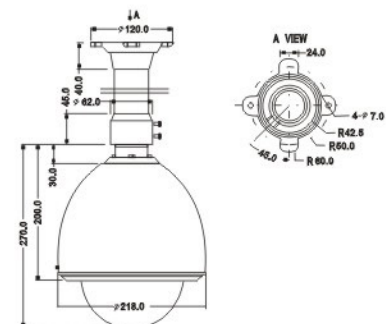
Wall Mount



Corner Mount



Pole Mount



Pendant Mount