

MultiVision

Intelligent Surveillance

www.multivision.com.hk



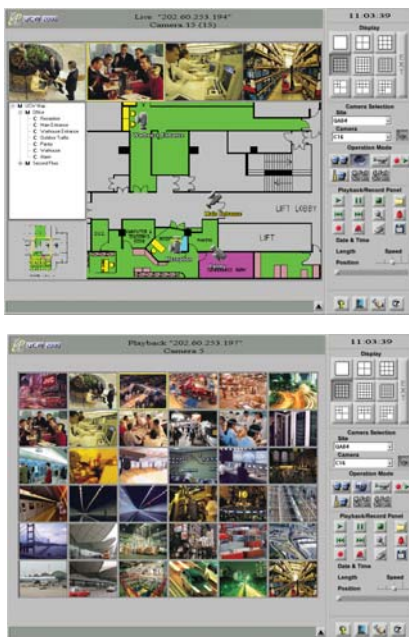
UNET CLIENT WORKSTATION | Digital Video Surveillance System **UCW SERIES**

*Advanced Digital Surveillance Solution With
True Real-Time Monitoring And Improved Image Quality*

Total Management Solution for Digital Video Network System

UCW (Unet Client Workstation) is a digital video management system developed by MultiVision that runs parallel with MultiVision NetServer range of products. UCW is a universal PC based software program which is user-friendly and operates under Microsoft Windows with utilization of a computer keyboard and mouse.

UCW enables the controller to link and monitor multiple NetServers at different locations. UCW provides a flexible and cost-effective solution far beyond the conventional digital video recorder.



User Friendly GUI

Operation and control are simple with drag, point and click of the PC mouse. User can view live video(s) and control P/T/Z cameras from anywhere in the world. The map of the entire monitoring area can be shown on screen. User can zoom into any particular area to view the details such as the location of the cameras and alarm detectors. By clicking the relevant area name on a hierarchical list on the side, the user can also zoom out to the global view of the map.

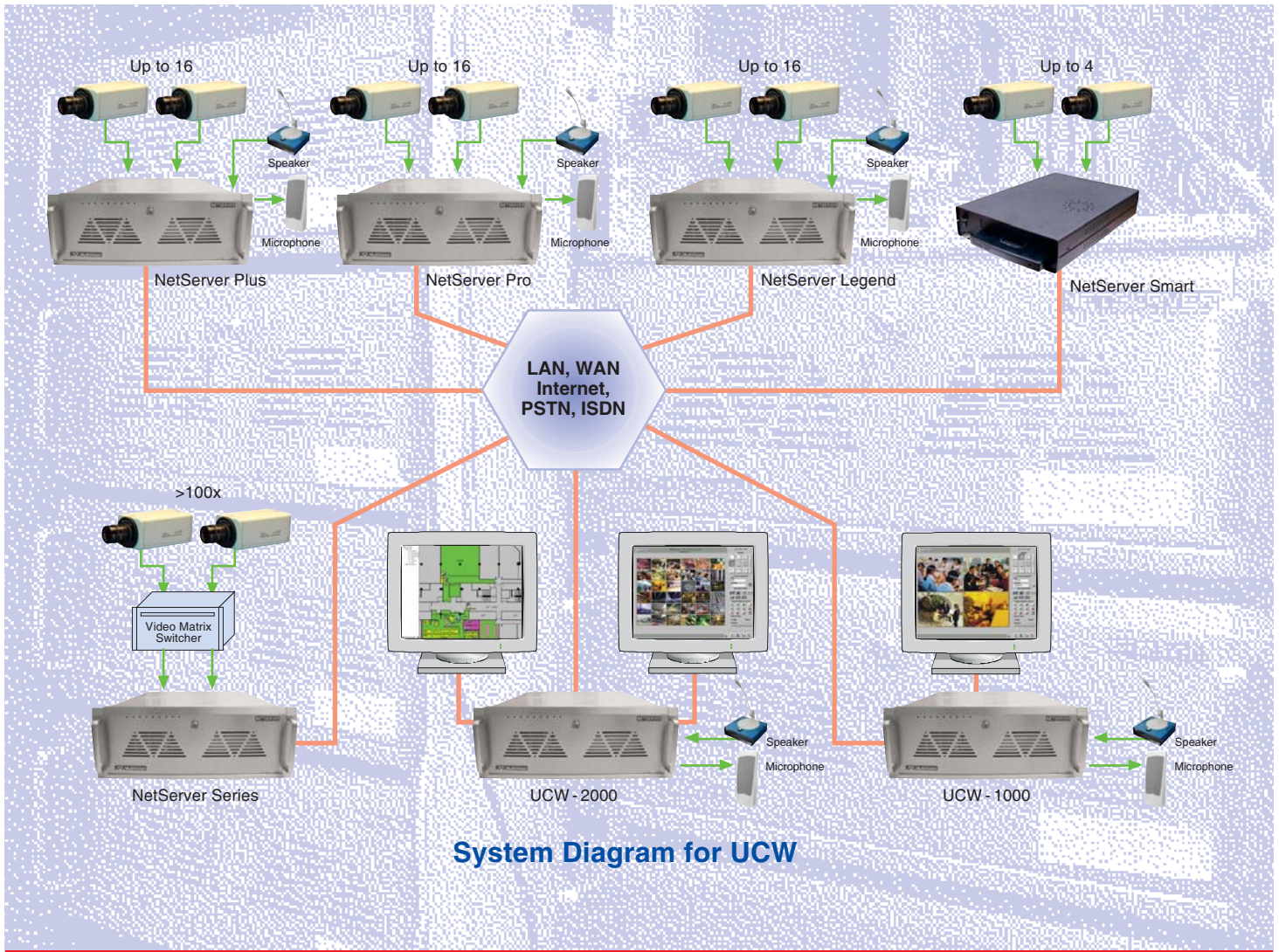
Location of the cameras from different sites in the system can be clearly shown on all of the maps. User can point and click with the mouse on the camera icon to view the live video captured by any particular camera without remembering the camera and site numbers.

Viewing on Demand

UCW allows you to view live video(s) and recorded image(s) from any particular sites, anytime, anywhere. Viewing, recording and playing back images can be performed simultaneously on up to a maximum of 36 display windows.

General System Features:

- * Complete, easy-to-install, user-friendly but powerful video surveillance management system
- * Online viewing, recording, playing back (or any operation combination) of up to 36 remote sites simultaneously via LAN, Internet, ISDN and PSTN
- * User friendly and easy-to-control on-video Pan/Tilt/Zoom
- * Multi-view screen display: 1, 4, 7, 9, 10, 13, 16, 25 or 36 live or play back images at once
- * Indication of camera locations as icons on the maps for easy selection and identification
- * Compatible with all NetServer Series
- * CIF resolution Video display (PAL:384x288, NTSC:320x240)
- * Bi-directional audio communication with NetServer (NS3.0)
- * No effect on the local recording and operation
- * Receiving alarm alert notification with pop-up camera image from any of the remote NetServer sites
- * Re-sizeable digital zoom of up to 30x for live or playback video
- * MPEG-4 compression technology
- * Configurable maps and camera icons
- * Camera touring – automatically sequence through multiple cameras from different remote sites
- * Programmable overlay indication of time, date, site and camera names
- * Adjustable frame rate and video quality
- * Multilingual capability
- * Remote viewing password and user control management

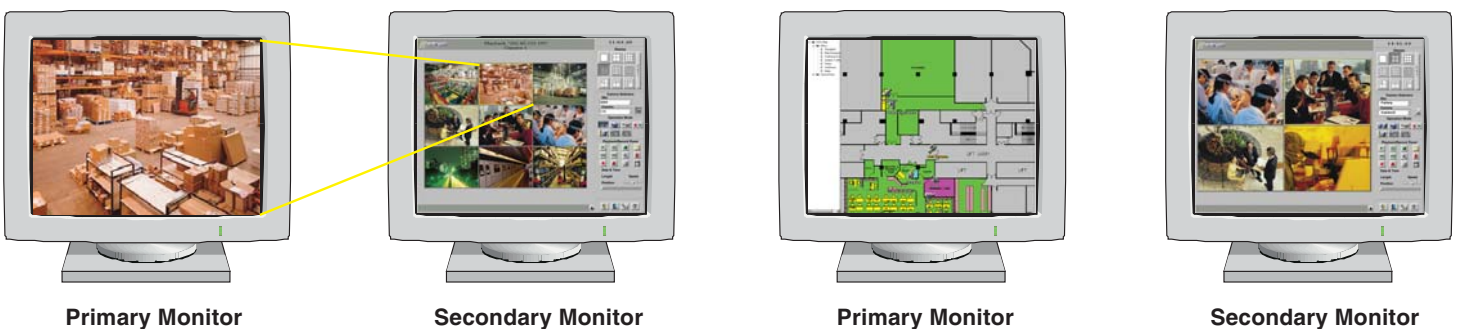


User Friendly GUI

UCW-2000 supports dual display operation (e.g. one monitor is for video display and selection operation while the other monitor is used for enlarging the particular video image or show map display) that provides easy, fast and convenient operation for the operators.

The operator can select any particular camera image (live or playback image) to easily enlarge and pop up on the secondary monitor for further investigation.

The display map can be shown on the secondary monitor for better and complete view of camera locations while the primary monitor is used for displaying the camera image(s).



Technical Specifications

UCW - 500

UCW - 1000

UCW - 2000

Video Features

Maximum of remote Live videos	4	16	36
Video Display Resolution	PAL: 384x288 (with enhancement) NTSC: 320x240 (with enhancement)	PAL: 384x288 (with enhancement) NTSC: 320x240 (with enhancement)	PAL: 384x288 (with enhancement) NTSC: 320x240 (with enhancement)
Multi-view screen display formats	Single, quad	1,4,7,9,10,13,16	1,4,7,9,10,13,16,25,36
Overlays for Time, Date, Site name and camera ID	Yes	Yes	Yes
Refresh rate	Up to 4 real-time display channels	Up to 9 real-time display channels	Up to 9 real-time display channels
Dual display operation	No	No	Yes
Programmable Camera touring	Yes	Yes	Yes
Full Screen mode (hiding all the control panels and buttons)	Yes	Yes	Yes
Re-sizable digital zoom	Yes	Yes	Yes

Recording Features

Max. Recording channels	4	16	36
Video Recording Resolution	PAL: 384x288 (with enhancement) NTSC: 320x240 (with enhancement)	PAL: 384x288 (with enhancement) NTSC: 320x240 (with enhancement)	PAL: 384x288 (with enhancement) NTSC: 320x240 (with enhancement)
Compression codec	MPEG-4	MPEG-4	MPEG-4
Average frame size	2.5K	2.5K	2.5K
Recording speed	Up to 100 f/s	Up to 200 f/s	Up to 225 f/s
Circular recording mode	Yes	Yes	Yes

Playback Features

Max playback screen	4	16	36
Playback at different speed, shuttle forward and backward	Yes	Yes	Yes
Image capture, zoom, save and printout	Yes	Yes	Yes
Fast playback search by site, camera ID, time and date	Yes	Yes	Yes
Playback from remote or local site(s)	Yes	Yes	Yes

Other Features

Simultaneous recording, playback and on-line viewing	Yes	Yes	Yes
Dual display with Map, camera icons indications	No	No	Yes
Alarm alert notification with pop-up camera image from remote site(s) with sound	Yes	Yes	Yes
History log of alarm event	Yes	Yes	Yes
Works for all NetServer series	Yes	Yes	Yes
Adjustable frame rate and quality	Yes	Yes	Yes
Remote viewing user and password control	Yes	Yes	Yes
Bi-directional audio communication with NetServer (NS 3.0)	Yes	Yes	Yes
Configuration for P/T/Z	Yes	Yes	Yes
Remote control P/T/Z	Yes	Yes	Yes
Interface with UMS	No	No	Yes
Language GUI (Traditional/Simplified / English)	Yes	Yes	Yes
Data Backup Option	Yes	Yes	Yes

Standard Configuration

CPU	Pentium IV 1.5GMhz or above
Hardware Configuration	80GB HDD, 3.5" FDD, 256MB RAM, CD-R/RW, built-in 10/100M LAN card, Dual Head display (UCW 2000 only)
Casing	Rack-mount chassis
Operation temperature	0°C to 55°C
Max relative humidity	15% to 85% (relative)
Operating system	Windows 2000 / XP professional

UCW can be ordered in software packages. The models for the software packages are as follows:

1. UCW-500-SW UNET Digital Video Management Software
2. UCW-1000-SW UNET Digital Video Management Software
3. UCW-2000-SW UNET Digital Video Management Software

Specifications subject to change without notification



26/F Aitken Vanson Centre, 61 Hoi Yuen Road, Kwun Tong, Kowloon, Hong Kong
 Tel: (852) 2797 5678 Sales Hotline: (852) 2797 5698 Fax: (852) 2797 5679
 E-mail: enquiry@multivision.com.hk Web: www.multivision.com.hk